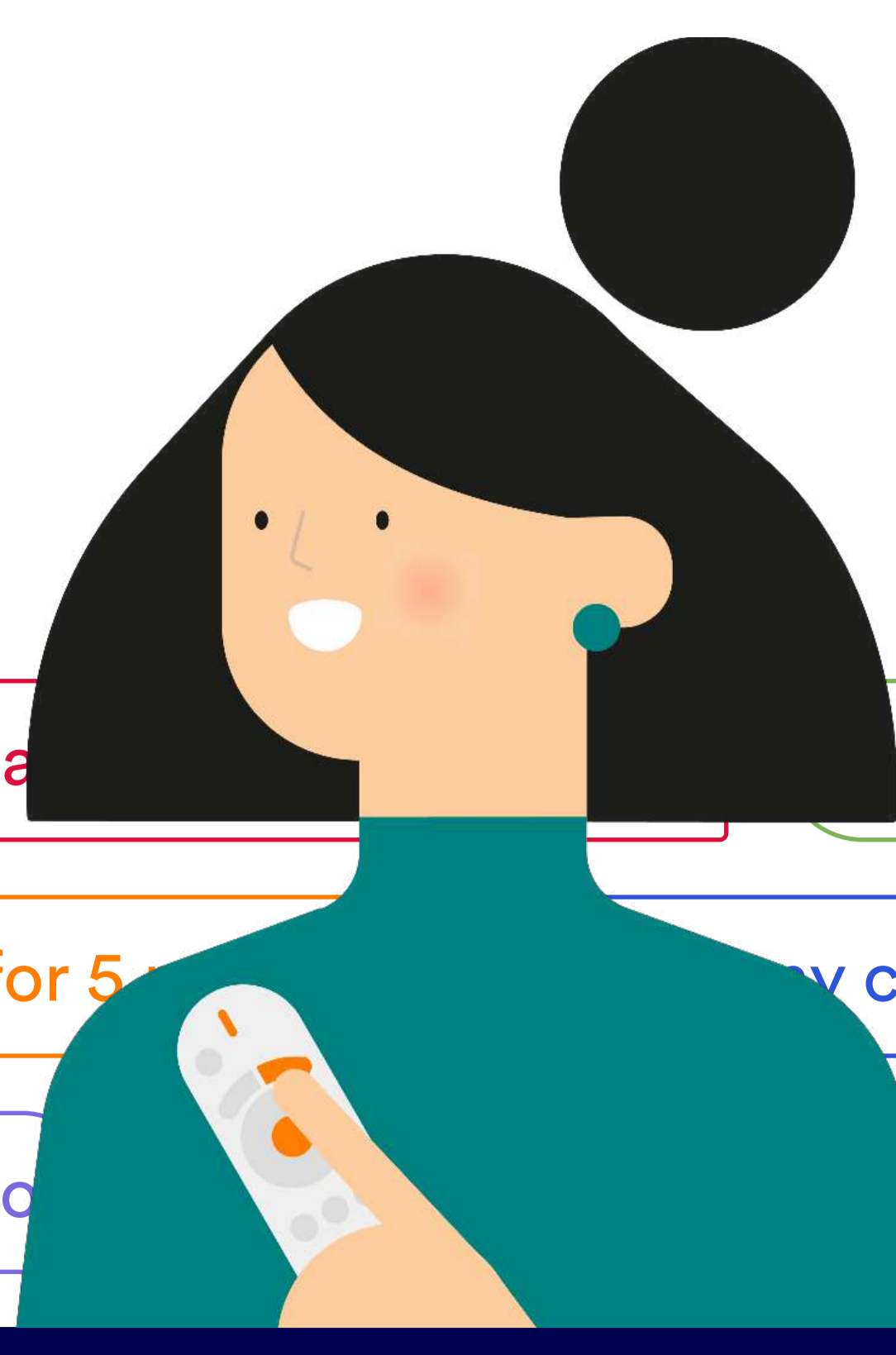




Hi there, Meet Merlyn

The digital assistant for teachers.



Go to Kahoot

Show my document camera

Open my presenta

Search for videos of sharks on YouTube

Next slide

Set a timer for 5

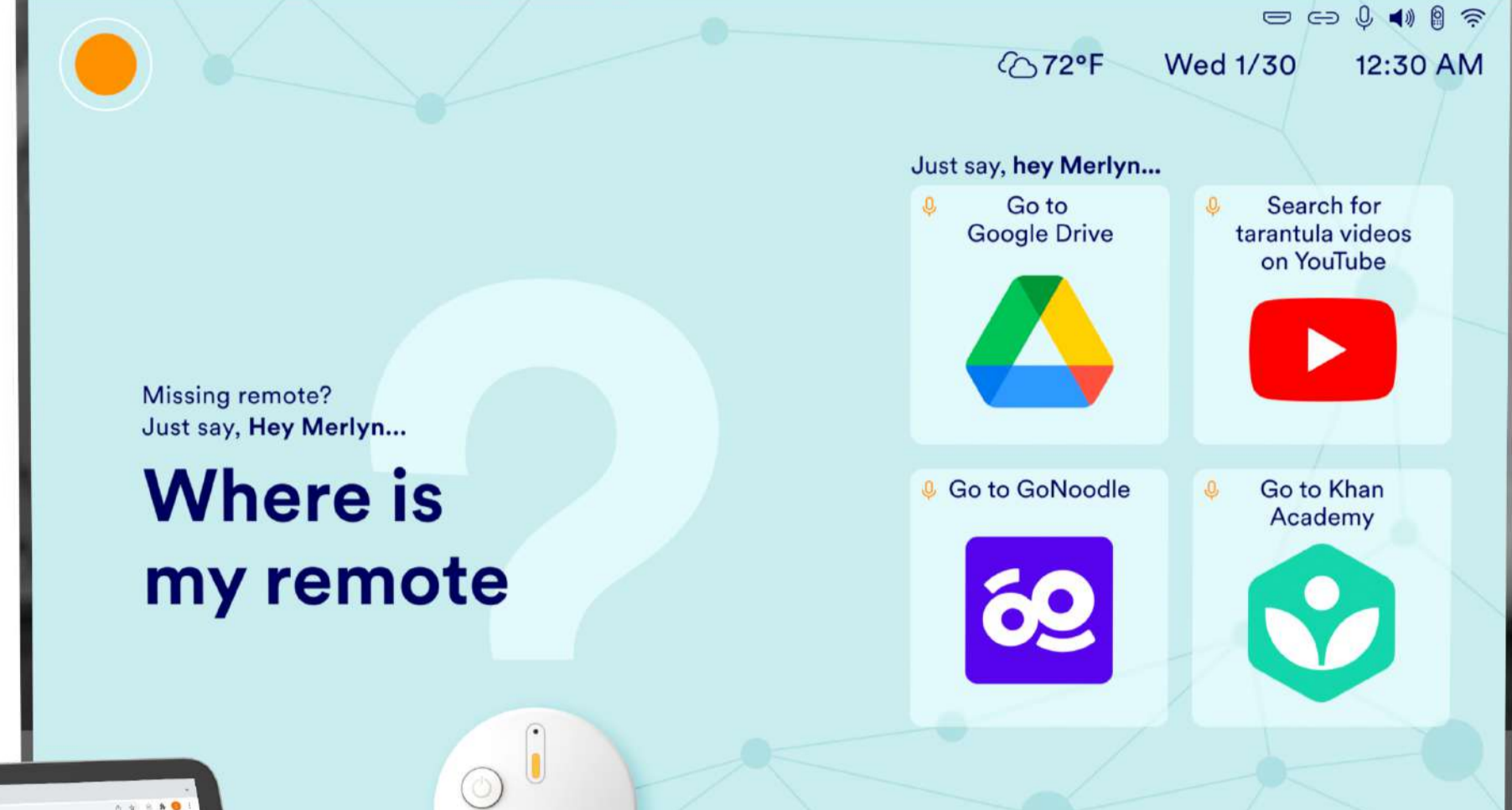
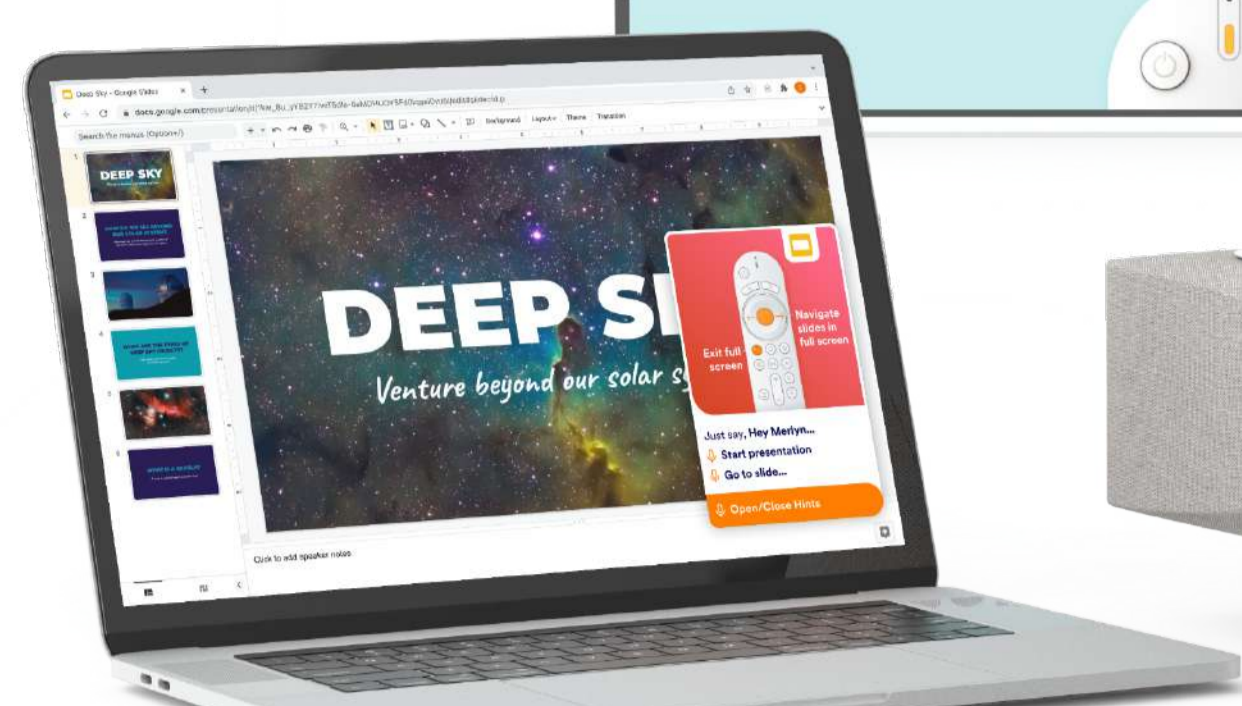
2 Open the last tab

Go to 2 minutes and 30 seconds in the video

The parts of Merlyn

Computer

Merlyn software enables control of your browser using voice and remote.



Classroom display

Displays multiple sources of content through Merlyn.

Remote control

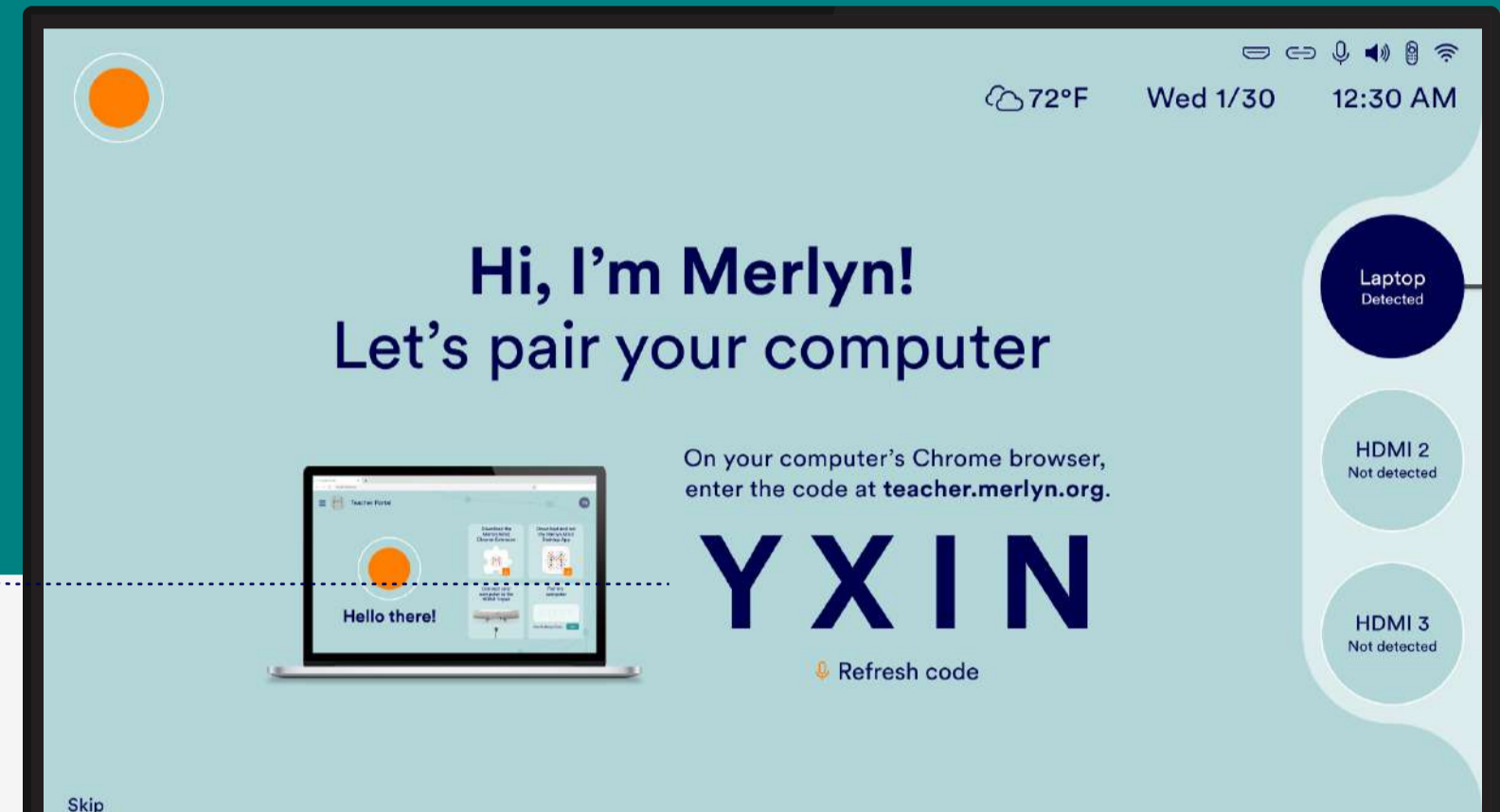
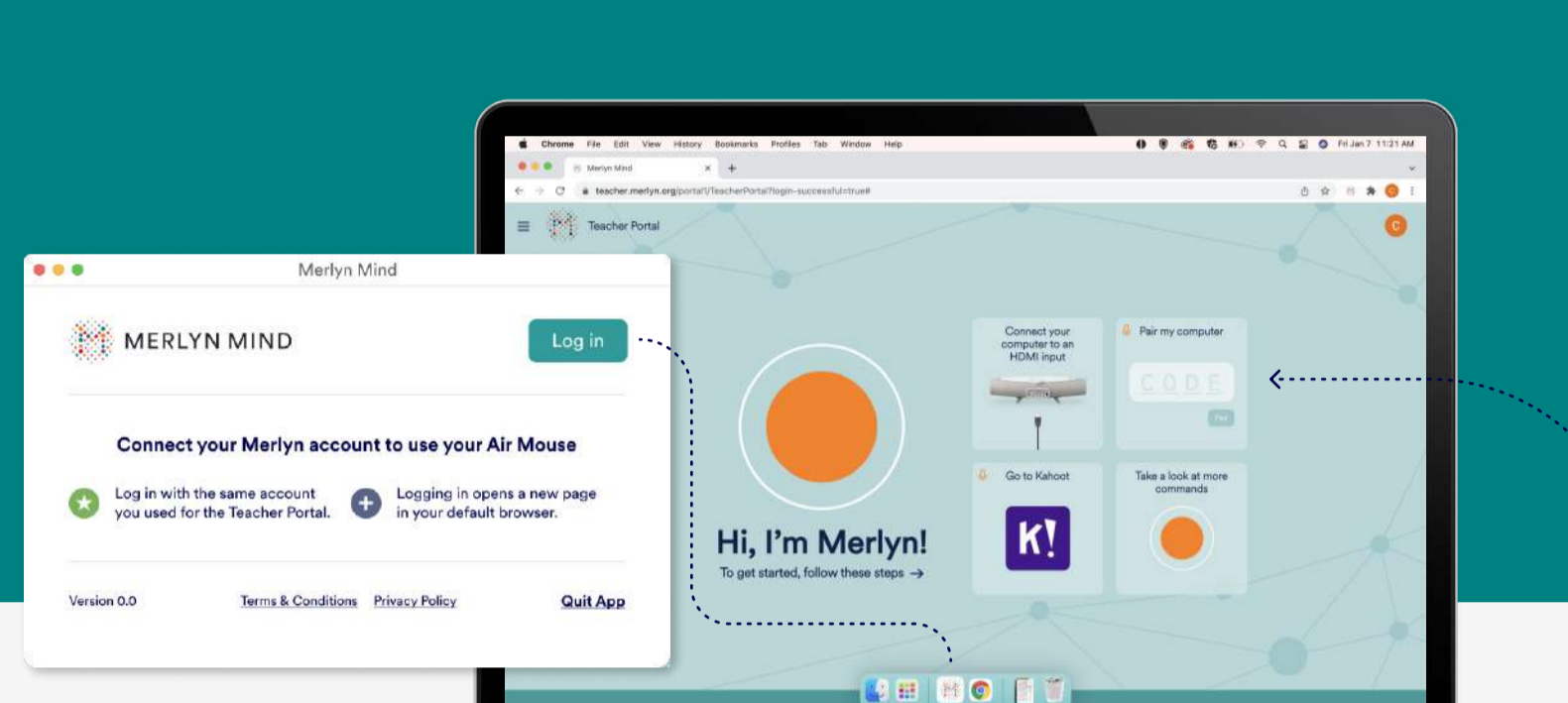
Equipped with microphone and air-mouse.

Merlyn's Hub

To connect all your devices, listen and respond to your requests.

Daily Use

For daily use, setup must be complete. If you need help setting up, scroll down to the Setup section of this guide and you'll find instructions.



1. Log into the Desktop App

Open the **Merlyn Mind Desktop App*** and login using your authorized school account.

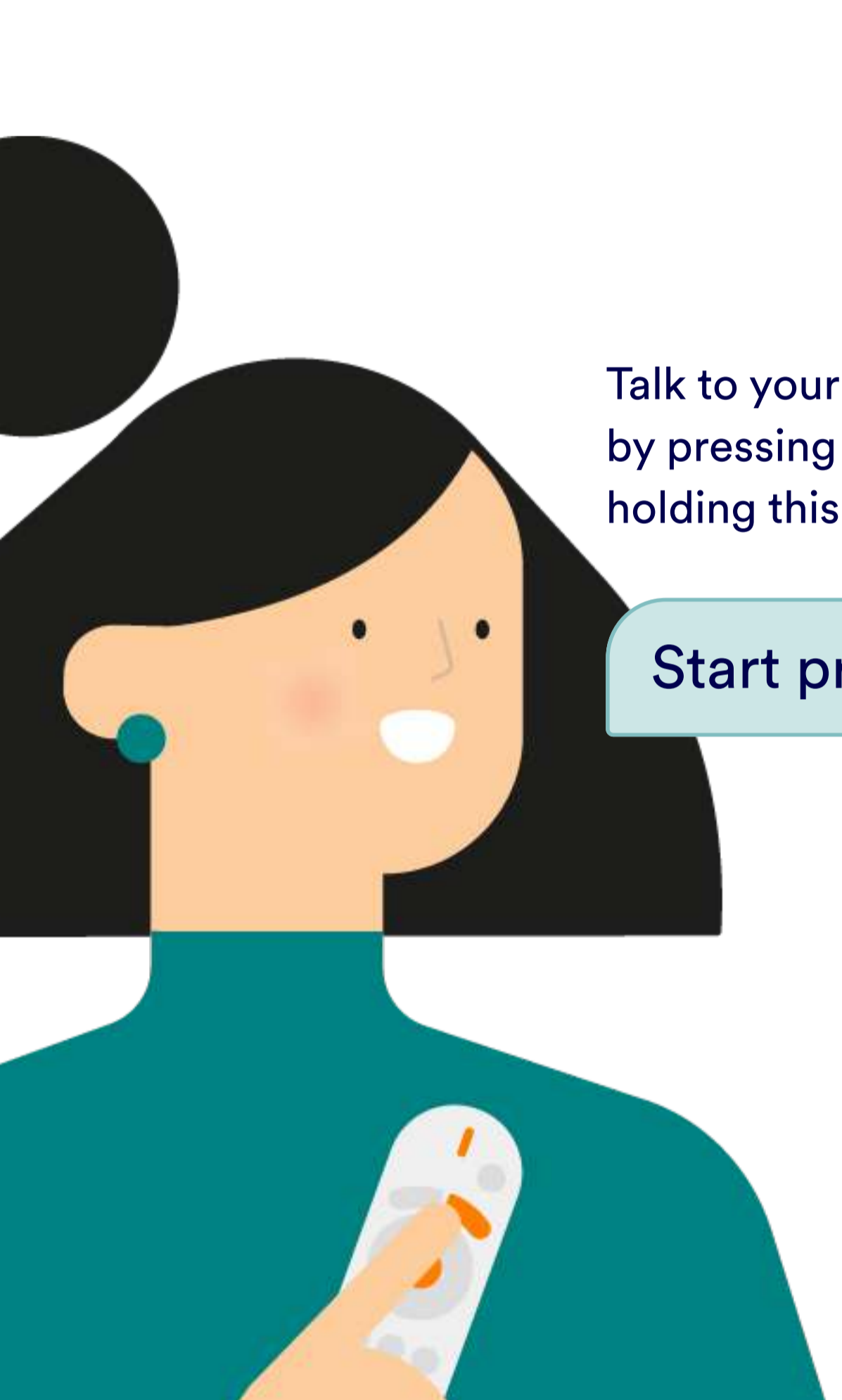
*not installed? Scroll down to the Setup section of this guide for instructions.

2. Pair your computer

With Google Chrome as your default browser, log into the **Teacher Portal** at teacher.merlyn.org and pair your computer using the code on your classroom display.

Pairing allows you to navigate using Merlyn with voice and your remote!

Ready to talk to Merlyn?

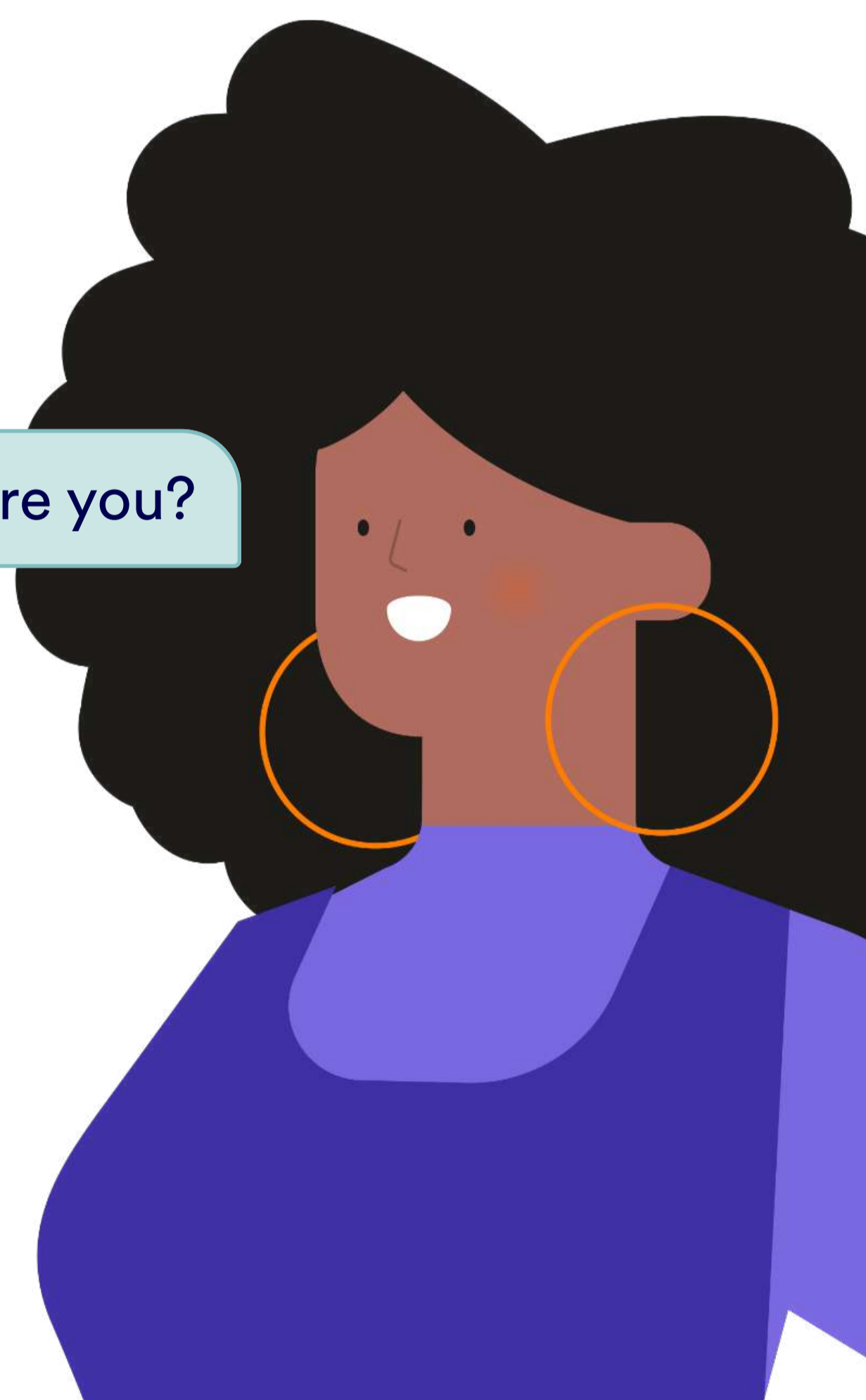


Talk to your remote by pressing and holding this button.

Start presenting

Or, talk to Merlyn from anywhere in the classroom. Just say, "Hey Merlyn..." at the start.

Hey Merlyn, how are you?



Time to practice!

Remember, just say "Hey Merlyn..." or press and hold the button on your remote.

Set a timer for 10 seconds

Then press any button on the remote to stop the chime.

Switch display

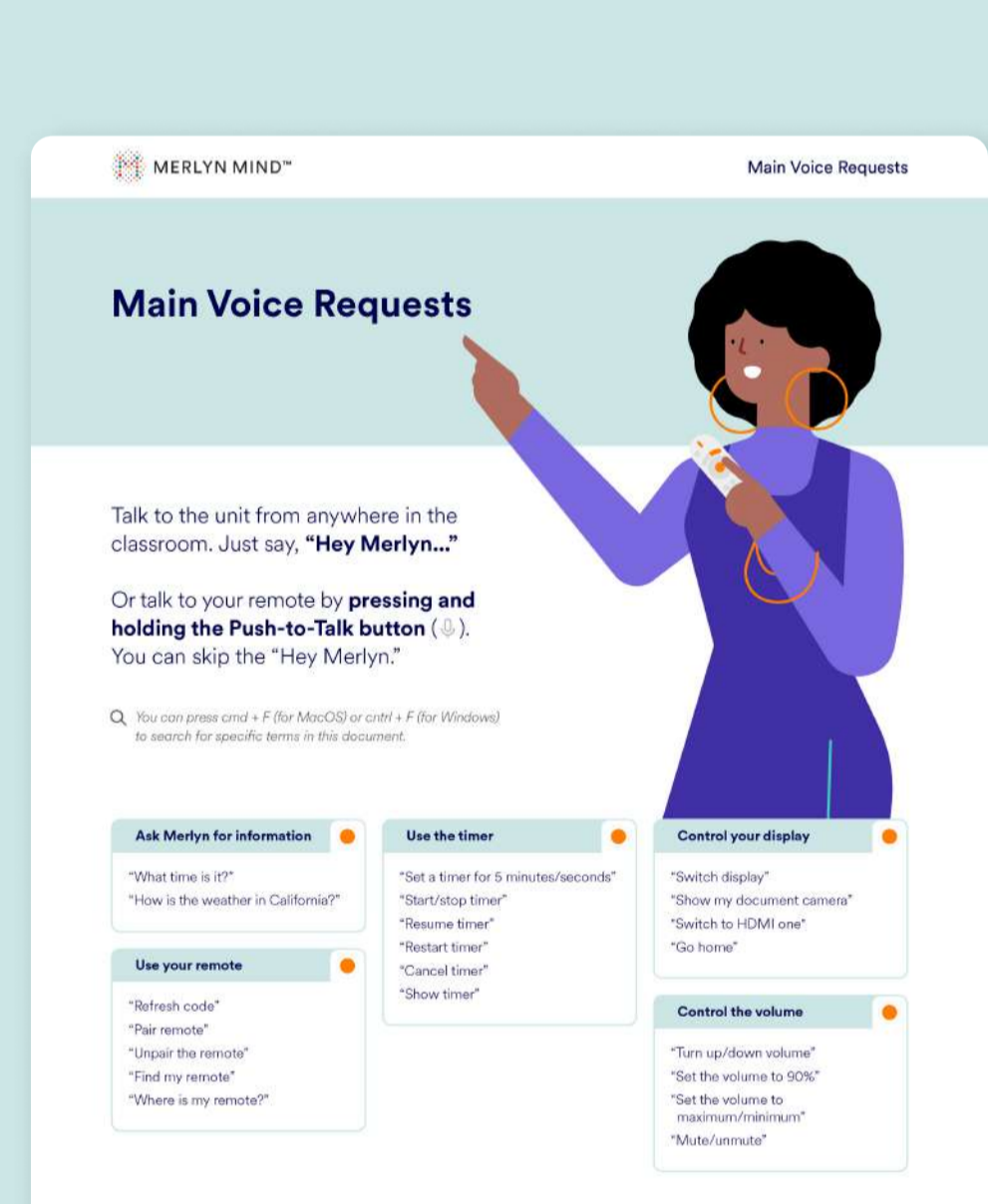
To view and manage your connected devices.

Search for dolphin videos on YouTube

Quickly finds results.

Open Hints

Merlyn's Hints will help you discover what Merlyn can do for you along the way.



Print your guide of voice requests [here](#).

Setup

Connect all parts and onboard

If your IT Admin has connected your classroom screen and completed the process for you, proceed to step 3.

1. Connect your Classroom Display to HDMI Out. Ensure your Display and Merlyn's Hub inputs match. Example: both on HDMI 1.
2. Turn the Power switch on and complete the onboarding process that will show on the display.
3. Once onboarding is complete, connect your computer to PC/HDMI 1.



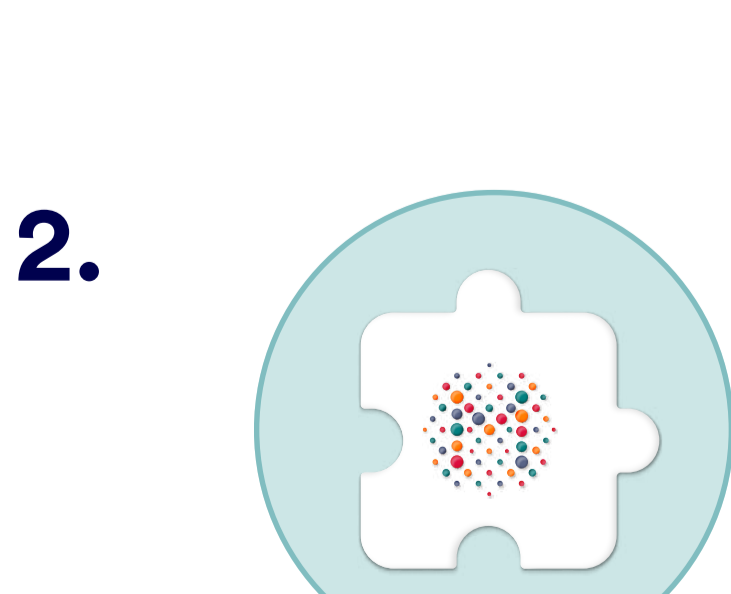
Check your computer software

Your IT Administrator may have installed these for you. If not, follow the steps below.



Chrome browser

You must use Google Chrome. Make sure it is set as your default browser.



Merlyn Mind Chrome Extension

This allows control of your browser functions via remote and voice.



Merlyn Mind Desktop App

The app always runs in the background to give your remote control accurate point, click and drag functions.

*The desktop app is not currently compatible with Chromebooks.

For more guides and other resources, visit merlyn.org/support.